



**Enumclaw Forested Foothills Recreation Association**

# NEWSLETTER

OCTOBER 2011



*Horses enjoying playtime at O'Grady County Park*



## HIGHLIGHTS:



Vision Plan Completed

Adopt A Road For Effra

Guided Trail Ride For VIP's

Cascade Land Conservancy Breakfast

## TRAIL MARKERS!

Roadside Cleanup on Sunday Oct 23rd

Upcoming General Meeting, Dec. 12th

Membership Drive 2012



## EFFRA VISION:

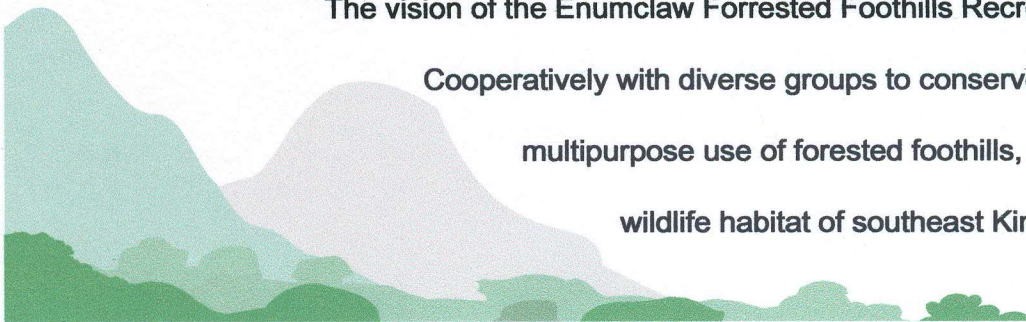
The vision of the Enumclaw Forrested Foothills Recreation Association is to work

Cooperatively with diverse groups to conserve for future generations the

multipurpose use of forested foothills, aquifers, wetlands and

wildlife habitat of southeast King County.

[www.effra.org](http://www.effra.org)



# BUSINESS

## EFFRA BOARD MEMBERS

Crystal Carter, President

Mary Fiala, Vice-President

Merridee Muse, Secretary

Gretchen McCallum, Treasurer

Debbie Vanous

Pat Roberts

Kevin Meyer

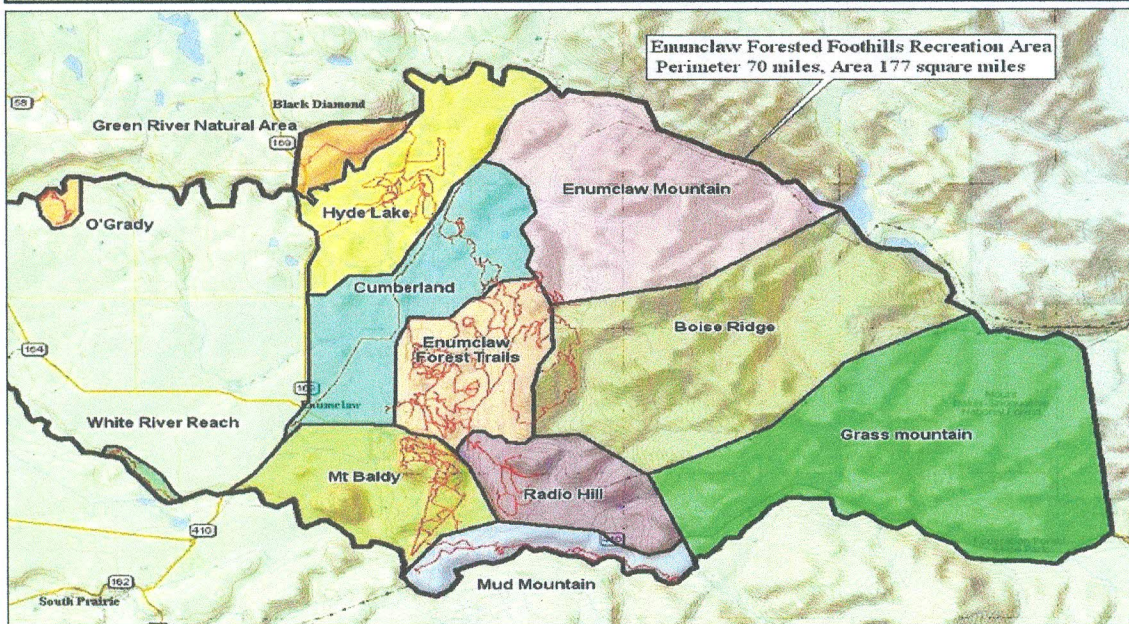
Joan Burlingame

Ralph Menching

The Enumclaw Forested Foothill Recreation Association is a grass roots volunteer group committed to conserving trails in the Enumclaw area for future generations to enjoy and explore. As a registered 501 (c) (3) non-profit organization, Effra raises money to purchase items or services to help inform and educate the public, landowners and government agencies about EFFRA's vision. It is EFFRA's goal to promote the cooperative and mutually desirable sale and purchase between parties, of lands and easements in the EFFRA region to allow continued access and use of the existing trails in the area. The monies raised and services gathered by EFFRA are through membership dues, donations and grants.

**EFFRA'S FINANCES ARE SOLVENT FOR THE YEAR TO DATE.**

**Election Time!** The positions of President, Secretary and Members at Large numbers 2,4,6 and 8 are up for election at the next general meeting on Dec. 12th 2011 at 6:00 pm at the Enumclaw Library. Nominations are being accepted now and on the night of the meeting. Go to [www.effra.org](http://www.effra.org) if you'd like to send in a nomination now. Feel Free to nominate yourself and join us!



*This map shows the areas  
EFFRA is including in it's  
vision to work cooperatively  
with the land owners to  
conserve the trails*

# CATCHING UP WITH EFFRA



EFFRA is proud to announce the completion of their Comprehensive Management

Vision Plan. This plan was written through a combined effort of EFFRA members and the Planning Team, The Advisory Committee, and with wonderful guidance from Bryan Bowden of the National Park Service. EFFRA would like to thank Bryan and everyone else who participated in this project. The final Vision Plan was the result of input from the Advisory Committee and much input from the general public through open workshops and information gathering. It represents the best consensus of what the community would like to see in the long range future of the Enumclaw area and recreational opportunities. Copies of the Vision Plan were provided to the King County Council, The City of Enumclaw and other surrounding agencies. The completed plan is available for viewing or downloading from the EFFRA website: [www.effra.org](http://www.effra.org)



*Community members gather at the Field House  
In Enumclaw for an open workshop during the  
Drafting of the Comprehensive Management  
Vision Plan.*



EFFRA has joined with King County Road Services and their Adopt-A-Road program and has happily taken on the task of working to maintain SE Mud Mountain Road in Enumclaw. One work party to clean up trash and debris along the road occurred in May. The next work party is scheduled to take place on Sunday, October 23rd at 10:00 am. This is your chance to put in some volunteer time, support EFFRA, and get some fresh air and exercise! This will also be a great opportunity to visit with other EFFRA members and learn more about what EFFRA has been up to. We will start on the west entrance of the road at Hwy 410 Near the Buckley bridge. For more information please call 253-569-4804



EFFRA, in partnership with the Tahoma Chapter of the Backcountry Horseman sponsored another guided trail ride for the purpose of providing a first hand look at the beautiful Enumclaw foothills and demonstrating the benefits to continued access of these trails and surrounding areas. Invited officials on this ride included King County Councilman Larry Phillips, King County Dept. Of Natural Resources Representative Ingrid Lundin, and City of Enumclaw's Community Development Director, Ericka Shook.



*Top photo: Riders ready to head out on to the trail.*



*Photo left: Participants enjoying lunch and conversation before the ride. Camper and hospitality area provided by EFFRA member Ralph Menching.*

The trail ride included everything you would expect out in the woods; plenty of fresh air, downed tree limbs blocking the trail, a bear sighting , a bees nest causing a little excitement and lots of happy smiles. Many thanks to Ken Shultz and Joan Burlingame of the Backcountry Horseman for providing the mules and assistance. EFFRA president Crystal Carter provided the horses and lead the ride, supported by horseman and EFFRA member Leandro Ramirez.



EFFRA sponsored a table again at the 16th annual Conservation Awards Breakfast hosted by the Cascade Land Conservancy (CLC) . This is one of the major fundraising events put on by the CLC. Crystal Carter was the table captain for the EFFRA table and was surrounded by supporters John Carter, Mary Fiala, Ralph Menching, Lisa Loboduk, Chris, Keely and Shannon Key. The CLC was founded in 1989 and is the largest Independent land trust in Washington State having protected nearly 175,000 acres in 10 counties in the region. EFFRA is working with the CLC to promote the conservation of lands within the EFFRA region. For more information on the Cascade Land Conservancy please visit: [www.cascadeland.org](http://www.cascadeland.org).

# THE BULLETIN BOARD

## EFFRA GENERAL MEETING:

The next general meeting will be  
On Monday, December 12th at the  
Enumclaw Library starting at 6:00 pm.  
Guest speaker and meeting info  
will be on the EFFRA website soon.

## ADOPT-A-ROAD DAY

The next work party to clean  
Up EFFRA's adopted road will  
be Sunday Oct.23rd at 10:00 am.  
Meet at the west entrance of SE  
Mud Mountain Road at Hwy 410

## KING COUNTY AG COMMISSION

The next meeting for the King County  
Agriculture Commission is from  
5:00 to 8:00 pm on Thursday,  
October 20th at the Enumclaw High  
School.

EFFRA would like to thank the many people and businesses who have donated time, money or services to the EFFRA cause. We wouldn't be where we are today without you! A complete list of the supporters and donations for this year will be in the January 2012 newsletter.

## E-MAIL CONTACT INFORMATION:

Enumclaw Forested Foothills Association (EFFRA) : [effra.org](http://effra.org)

Tahoma Chapter Backcountry Horseman of Washington: [tahomabchw.org](http://tahomabchw.org)

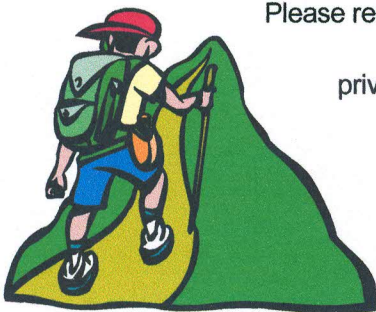
Cascade Land Conservancy: [cascadeland.org](http://cascadeland.org)

Washington State Animal Response Team (WASART) : [washingtontart.org](http://washingtontart.org)

Washington Trails Association (WTA) : [wta.org](http://wta.org)

King County Department of Natural Resources and Parks: [kingcounty.gov/environment/dnrp.aspx](http://kingcounty.gov/environment/dnrp.aspx)

## RESPECT THE LAND AND THE LANDOWNERS!



Please remember that many of the trails in the EFFRA region pass through lands owned by private companies and individuals. The ability of the public to access and use these trails could be lost at any time if good stewardship is not practiced by all.

Educate yourself about the landowners rules and act accordingly.

Respect the land and the landowners.



# ENUMCLAW FORESTED FOOTHILLS RECREATION ASSOCIATION

## MEMBERSHIP APPLICATION

COME JOIN US AND BE A PART OF  
MAKING A DIFFERENCE IN YOUR COMMUNITY!

To join EFFRA, complete this application and enclose payment.

Turn the application and payment in to EFFRA, P.O. Box 462, Enumclaw, WA 98022. If  
Paying by check, please make it payable to EFFRA.

Annual membership dues are \$15.00 per person and payable on January 1<sup>st</sup> of each year. Dues  
Paid after November 1<sup>st</sup> are applied to the subsequent year's dues.

If a member household wishes to receive the quarterly EFFRA Newsletter in black and white hard  
copy rather than via e-mail an additional \$5.00 should be added to the membership dues.

APPLICATION DATE: _____	AMOUNT ENCLOSED:	
	ANNUAL DUES: \$15.00	\$ _____
	EFFRA NEWSLETTER \$5.00	\$ _____
	DONATION TO EFFRA	\$ _____
	TOTAL ENCLOSED:	\$ _____

### HOUSEHOLD/ MEMBER INFORMATION

HOUSEHOLD ADDRESS: \_\_\_\_\_  
\_\_\_\_\_  
\_\_\_\_\_

HOME PHONE NUMBER \_\_\_\_\_

### EFFRA MEMBERS IN HOUSEHOLD:

Name: \_\_\_\_\_ E-mail / Cell \_\_\_\_\_

Name: \_\_\_\_\_ E-mail / Cell \_\_\_\_\_

Name: \_\_\_\_\_ E-mail / Cell \_\_\_\_\_

Name: \_\_\_\_\_ E-mail / Cell \_\_\_\_\_

FOR MORE INFORMATION ABOUT EFFRA PLEASE CHECK OUT OUR WEBSITE: [www.effra.org](http://www.effra.org)

EFFRA IS A 501(c)(3) NON-PROFIT ORGANIZATION